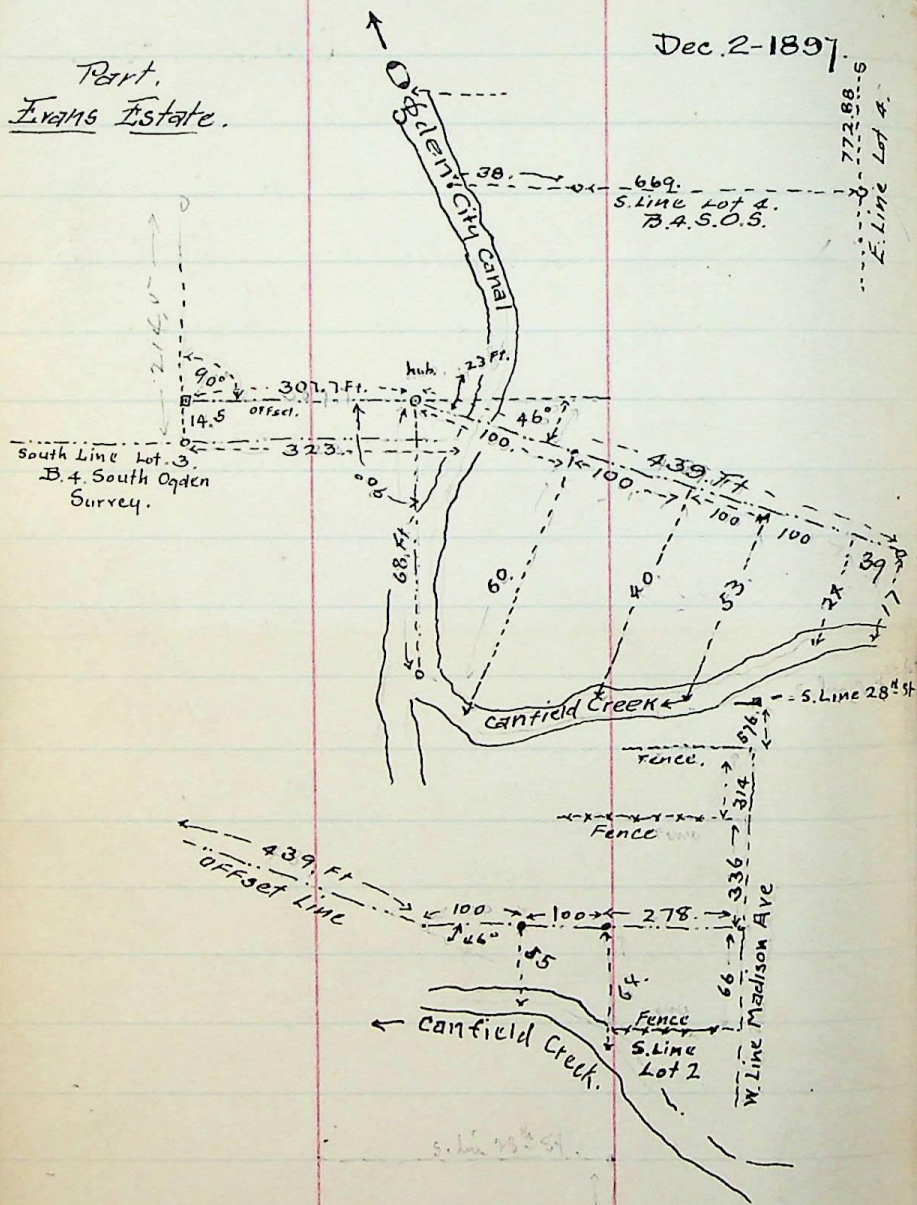


Part.
Evans Estate.

Dec. 2-1897.



77

77

Dec 4-1897.

U.P. to Wm Bowman, 9th. N. E. 1/4 Sec 27. T. 5. N.

R. 1. W. 1/2 Sec. S. W. Cor. N. E. 1/4 of N. E. 1/4 of Sec.

E. 145 ft. to point. N. 4° 29' E. 65 ft. to point
200 ft. S. at R. G. to U. P. track. N. 83° 47' W
333. ft. part to U. P. R. R. to intersection

with E. line proposed Co. Road S. 5° 45' W.
along E. line proposed alley. 258 ft. S. 73° 42' E
210 ft. to E. line of W. 1/2 of N. E. 1/4 of 4th Sec
27. N. 180 ft. to beg. 1.42 a

cut off 40 ft off N. side of above
for Timothy Kendall.

